



2023 J24 Lambert Lai Memorial Regatta

Sailing Instructions



ROCHESTER YACHT CLUB

1. SIGNALS MADE ASHORE

- 1.1. Notices to competitors will be posted on the official notice board in the Burgee Bar.
- 1.2. Signals made ashore will be displayed on the flagpole north of the RYC Clubhouse.
- 1.3. When the Flag AP displayed ashore is lowered, '1 minute' is replaced with 'not less than 45 minutes' in the race signal AP.
- 1.4. Any change to the sailing instructions will be posted before 0900 on the day it will take effect. Any change to the schedule of races will be posted by 2000 on the day before it will take effect.
- 1.5. In the event any change(s) to the Sailing Instructions are made, the Race Committee shall endeavor to display code flag L ashore. Failure to display flag L shall not be grounds for redress.

2. COURSES & MARKS

- 2.1. The configuration of courses are shown in Attachment 1.
- 2.2. The course to be sailed for each race will be signaled by placards displayed on the signal boat.
- 2.3. Marks will be orange, red, green or yellow tetrahedrons or cylinders
- 2.4. If a mark is changed, the race committee will set a new mark and remove the old one as soon as possible. If mark 1 is changed, there will be no offset mark (1A)

3. THE START

- 3.1. Races will be started in accordance with RRS 26
- 3.2. The class flag will be the J/24 Class flag
- 3.3. The starting line will be between the orange flag on the signal boat and the nearby starting mark. 3.4. The race committee will attempt to hail premature starters by sail numbers, boat names, or bow numbers. Failure to hail, failure to hear a hail, or the order in which boats are hailed, will not be grounds for redress. This changes RRS 62.1(a)

4. THE FINISH

- 4.1. The finish line will be between the orange flag on the signal boat and the nearby finishing mark.
- 4.2. Flag A displayed, with no sound, while boats are finishing means "No more racing today."

5. TIME LIMITS

- 5.1. Any boat not starting within 5 minutes of her starting signal for a race will be scored DNS for that race. This changes RRS 35 and A4.
- 5.2. The race shall be abandoned if no boat is to mark 1 within 40 minutes or finishes within 90 minutes of the starting signal.
- 5.3. Any boat not finishing within 15 minutes of the first boat to finish will be scored DNF for that race. This changes RRS 35 and A4.

6. SAFETY

- 6.1. [DP] Competitors shall check in each day by sailing past the signal boat's transom on starboard tack and hailing her sail number.
- 6.2. [DP] A boat that retires from a race shall notify the Race Committee as soon as possible

7. HEARING REQUESTS

- 7.1. Hearing request forms are available in the RYC Burgee Bar.
- 7.2. The time limit for filing hearing requests is 60 minutes after the Race Committee boat docks. The RC docking time will be posted on the official notice board.

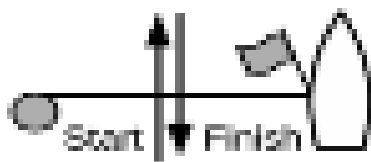
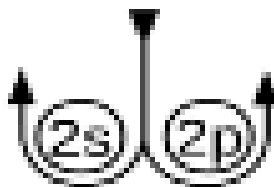
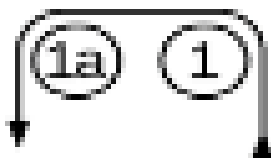
8. SCORING

- 8.1 The Low Point Scoring System RRS Appendix A will be used. When fewer than five races have been completed, a boat's series score will be the total of her race scores. When five or more races have been completed, a boat's series score will be the total of her race scores excluding her worst score.
- 8.2 The OA intends to run as many races as possible.
- 8.3 One race will constitute a series.

9. PENALTY SYSTEM

- 9.1 The first two sentences of RRS 44.1 are changed to: "A boat may take a one-turn penalty when she may have broken one or more rules of Part 2 or RRS 31 in an incident while racing. However, when she may have broken one or more rules of Part 2 while in the zone around a mark other than a starting mark, her penalty shall be a two-turns penalty."

Appendix #1 – The Course



Course Designations:

- "2" Start --> 1 --> 1A --> Finish Downwind
- "3" Start --> 1 --> 1A --> Gate (2P or 2S) --> Finish Upwind
- "4" Start --> 1 --> 1A --> Gate (2P or 2S) --> 1 --> 1A --> Finish Downwind